



X-BUG



X-BUG IS AN INNOVATIVE ECO FRIENDLY NON-TOXIC MECHANICAL PRODUCT WITH A HYBRID MODE OF ACTION DESIGNED TO CONTROL THE CRAWLING PEST POPULATIONS.

X-BUG allows diversified approaches to pest control. The product can be used to control crawling and flying insects, both indoors and outdoors.

In case of bed bug control treatment in places where toxic products cannot be used (such as hospitals, health resorts, rest homes and hospices), it is recommended to use **X-BUG** in mixture with water only.

X-BUG is based on a unique ALL IN WEB. When applied to a surface it forms an air-permeable, 3D-Molecular structure. It causes the external mechanical immobilisation of the pests, which inhibits their ability to feed, resulting in a significant reduction of their population.

The working solution should be applied topically on all places where the pests gather. Proven **X-BUG** treatment should be performed using an LV (Low Volume) fine mister. No residual effect, no waiting period.

X-BUG'S UNIQUE FEATURES

- Hybrid formulation that can be used for pest control in mixture with water as well as an insecticide efficacy enhancer in mixture with an insecticide solution;
- The first in Europe Professional efficacy enhancer for the Pest Control market;
- Creates no resistance in treated insects (physical mode of action);
- Provides the immediate knock-down effect;
- Non-toxic in mixture with water only;
- Can be used in places where use of toxic substances is limited.

NO REGISTRATION REQUIRED

As the product does not contain an active ingredient, it does not require a registration.

CONTAINS:

Polyalkyleneoxide modified Heptamethyltrisiloxane.

VOLUMES AVAILABLE:

100 ml; 1,000 ml (1 Litre); 5,000 ml (5 Litres).

MODE OF USE:

Dilute **X-BUG** with water as recommended on a 50:1 or 100:1 basis as per product guidelines and in line with your hotels standard cleaning schedules.

Following on from first application, **X-BUG** should be re-applied every 21-28 days in cooler climates up to a maximum of 30 degrees.

In areas (or seasons) where the ambient air temperature exceeds 30 degrees, the recommended re-application period for **X-BUG** is 14 days.



RECOMMENDED PLACES OF APPLICATION FOR X-BUG



Cruise Ships



Warehouses



Waste Disposal and Landfill Sites



Stables & Farms



Parks & Recreational Facilities

RECOMMENDED PLACES OF APPLICATION FOR X-BUG



Hotels



Restaurants & Catering



Food Industry



Hospitals



Educational Establishments

BED BUGS... WHAT TO LOOK FOR



Black or brown stains, usually
in crevices



Molted skins



Adult bugs about the shape and size
of an apple seed

SIGNS YOUR HOTEL IS INFESTED BY BED BUGS:

- Bloodstains on mattresses, pillows and sheets;
- Bed bug feces-stains on bedding;
- Bed bug eggs;
- Bed bug skin (exoskeleton);
- Musty odor;
- Live bed bugs;
- Waking up with bed bug bites.



X-BUG ELIMINATES BED BUGS AND PESTS FOUND IN HOTEL ROOMS,
PUBLIC ENTERTAINMENT & SEATING AREAS AS WELL AS SEATING
ON THE TRANSPORT INFRASTRUCTURE WORLDWIDE.



THE X-BUG AFFECT

- **X-BUG** leaves no toxic residues on the surface after the treatment*;
- **X-BUG** has a broad spectrum of action towards numerous species of insects and arachnids;
- **X-BUG** provides the desired immediate effect to terminate bed bugs;
- **X-BUG** enhances the penetration of the insecticides to the hard to access places **;
- **X-BUG** can be used in the presence of food products*;
- **X-BUG** creates no resistance*.

* Refers to X-BUG mixed with water only

** Refers to X-BUG mixed with insecticide

PRODUCT PROPERTIES

X-BUG is a highly efficient, innovative formulation with a physical mode of action designed for immobilisation of insecticide resistant populations of insects in places hard to access.

X-BUG can be used in dilution with water only and as an insecticide efficacy enhancer. Proven enhances the bioavailability of the active substance leading to greater absorption.

X-BUG is a sprayable entrapping formulation that forms an air permeable three-dimensional molecular structure on a sprayed surface enabling an immediate encapsulation and immobilization of a wide range of pests.

X-BUG is effective against active and developmental stages of pests.

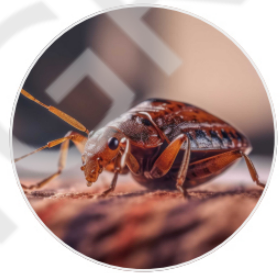
WHAT DOES X-BUG CONTROL?



Ants (Formicidae)



Beetles, applitobus diasperinus,
mealworm



Bed Bugs



Butterflies, including storage area pests
such as moths



Cockroaches and Locusts *Blattella*
germanica



Asian Lady Beetle

ADVANTAGES OF USING X-BUG

- Combined larvicide-adulticide with physical mode of action;
- Does not contain any toxic substances and leaves no toxic residues on the surface after treatment;
- Spreads quickly and evenly over surfaces and insects to ensure complete encapsulation and immobilization;
- Creates no resistance exceptionally effective;
- Controls pest populations in locations hard to access;
- Can be used in the presence of people and pet animals;
- Can be used in the presence of food products;
- There is no waiting period and withdrawal period after use;
- Provides the immediate (knock down) effect;
- Effective against numerous species of insects and arachnids;
- Suitable for indoor and outdoor use.



X-BUG IS DESIGNED FOR USE WITHIN HOTELS, RESTAURANTS, FOOD INDUSTRY, HOSPITALS & CARE FACILITIES, EDUCATIONAL ESTABLISHMENTS, ENTERTAINMENT VENUES, CRUISE SHIPS, ALL MODES OF TRANSPORT, WAREHOUSES, WASTE DISPOSAL, STABLES, FARMS AND PARKS.